

COMPSCI 705 - SOFTENG 702 Lecture 6

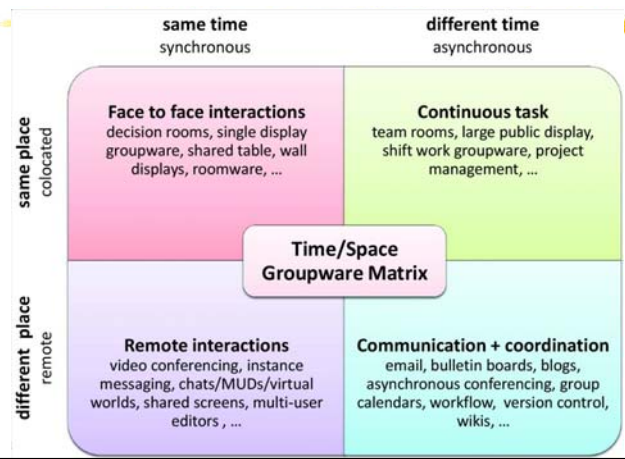
Computer Supported Cooperative Work

CSCW

- “how collaborative activities and their coordination can be supported by means of computer systems.”
Carstensen and Schmidt (1999)
- “CSCW [is] a generic term, which combines the understanding of the way people work in groups with the enabling technologies of computer networking, and associated hardware, software, services and techniques.”
Wilson (1991)

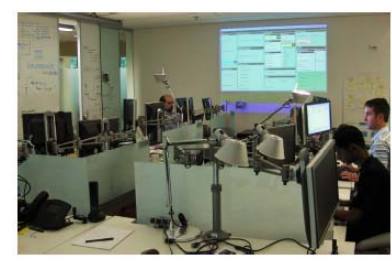
COMPSCI 705 - SOFTENG 702 §6. CSCW

CSCW Matrix



Example: FASTDash

- Dashboard approach
- Focus on software teams



COMPSCI 705 - SOFTENG 702 §6. CSCW

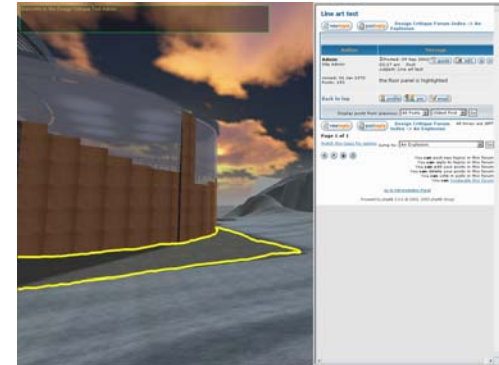
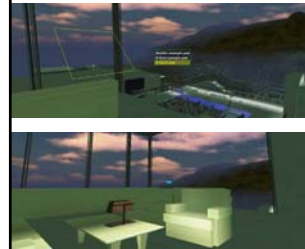
Collaborative Approaches



© S. CSCW

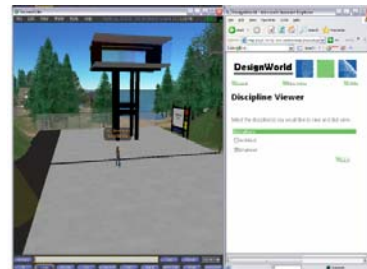
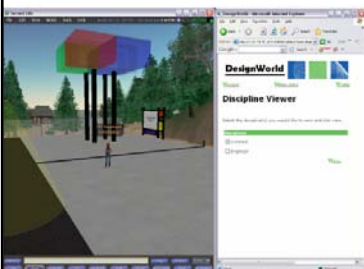


Collaborative Approaches



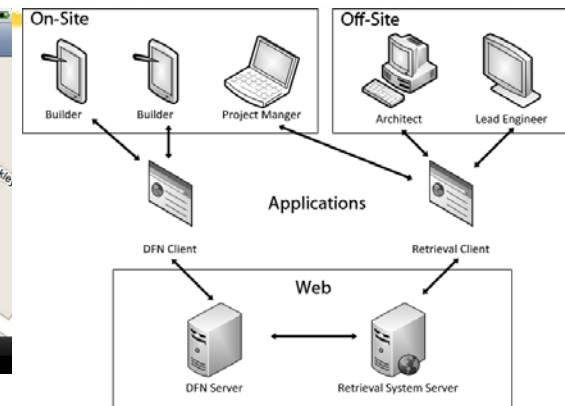
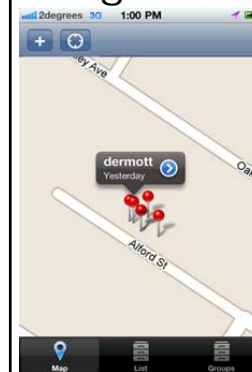
COMPSCI 705 - SOFTENG 702 © S. CSCW

Example: DesignWorld



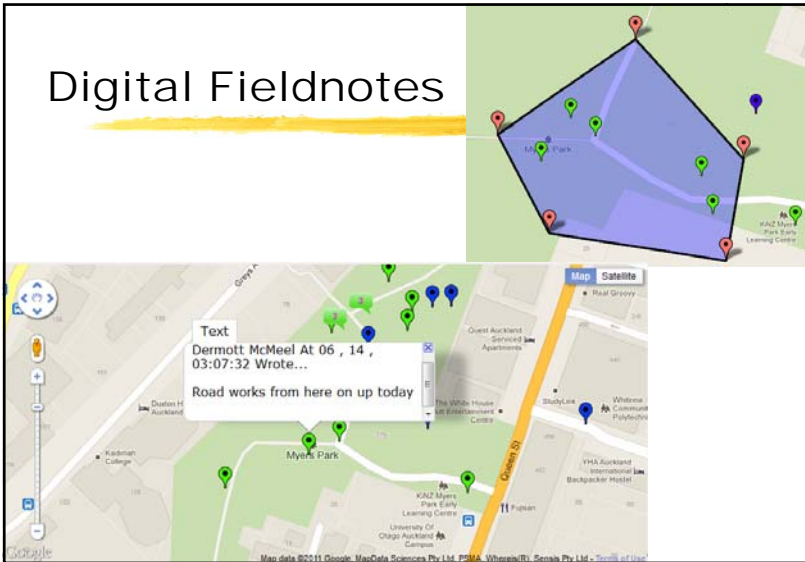
COMPSCI 705 - SOFTENG 702 © S. CSCW

Digital Fieldnotes

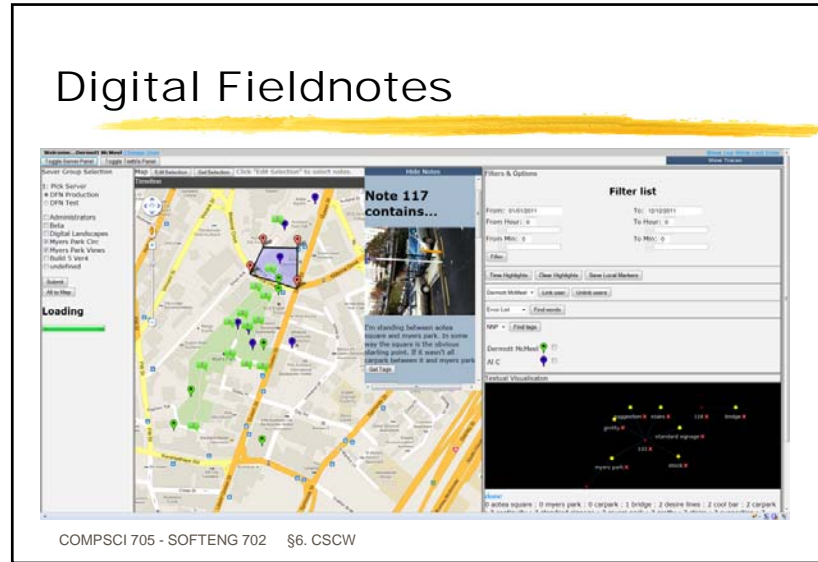


COMPSCI 705 - SOFTENG 702 © S. CSCW

Digital Fieldnotes



Digital Fieldnotes



References

- Biehl, J.T., Czerwinski, M., Smith, G. and Robertson, G.G. (2007) FASTDash: a visual dashboard for fostering awareness in software teams, In Proceedings of the SIGCHI conference on Human factors in computing systems (CHI '07), pp. 1313-1322.
- Dourish, P. and Bellotti, V. (1992). Awareness and coordination in shared workspaces, Proceedings of the ACM conference on Computer-supported cooperative work, pp. 107-114.
- Maher, M.L., Rosenman, M., Merrick, K., Macindoe, O. and Marchant, D. (2006) DesignWorld: An Augmented 3D Virtual World for Multidisciplinary, Collaborative Design, CAADRIA 2006.
- Marsh, S. (2012) DFNRS: Digital Field Notes Retrieval System, MSc thesis, University of Auckland, New Zealand, 169pp.
- Rama, J. and Bishop, J. (2006) A survey and comparison of CSCW groupware applications, SAICSIT '06, pp. 1-20.
- Wikimedia Commons: <http://commons.wikimedia.org/>
- Wikipedia: <http://en.wikipedia.org/>